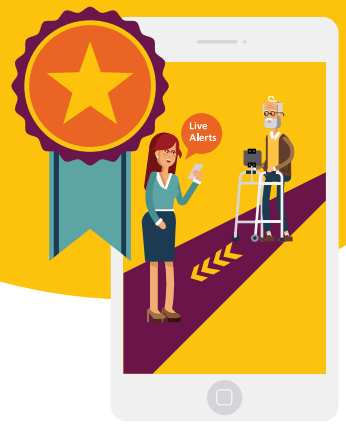


# Proud to be Longitude Prize on Dementia Discovery Award winners



**Care City, Dorothy and TPXimpact have been named as joint semi-finalists for the prestigious International Longitude Prize on Dementia for 'The Dorothy Community.'**

The Longitude Prize on Dementia drives the creation of personalised, technology-based tools that are co-created with people living with dementia, helping them continue to live fulfilling lives, doing the things they enjoy.

People living with dementia told us they want to live independently, access their community, socialise with friends, and continue to participate in activities they enjoy doing. But many we spoke to do not go out as they or those who care for them are concerned about the struggle to navigate places.

Traditionally, the Dorothy app, a wayfinding technology innovation, has been used within Care Homes. It uses Augmented Reality (AR) to create a digital yellow brick road, helping people to find their way around the home and uses Artificial

Intelligence (AI) to provide reminders of daily tasks, such as taking medication – all while keeping them connected to their care-giver.

The prize money will be used to develop the app into a platform, 'The Dorothy Community,' where community spaces such as shops, parks and museums, can offer navigation, enabling people with dementia or memory loss to find their way around and physically navigate through their community without further support.

Please contact us at [lpod@carecity.org](mailto:lpod@carecity.org) if you are:

- A venue that would like to offer this type of service and would like to help us test Dorothy
- A person living with dementia who would like to help us test Dorothy

---

Find out more about all 24 Discovery Award winners at [dementia.longitudeprize.org](http://dementia.longitudeprize.org)  
For media enquiries, please contact [rachel.fuller@carecity.org](mailto:rachel.fuller@carecity.org)



**Care City**



**Dorothy**

**TPXimpact**

# Please meet Dorothy...

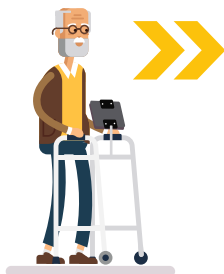
## 01 Remind

Dorothy reminds your loved ones about their daily chores in your voice – like brushing teeth or taking medication. You can set a scheduled notifications or send them from your smartphone at any time.

Brush Teeth

Take Meds

Drink Water

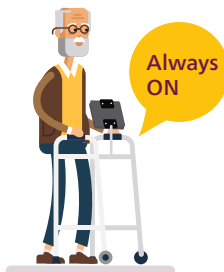
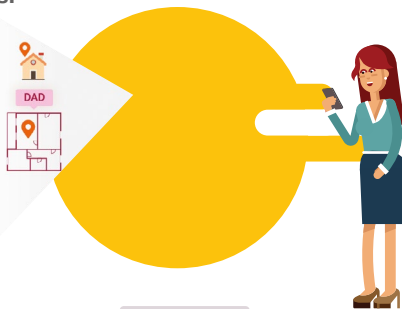


## 02 Navigate

Dorothy guides around the house using Augmented Reality. Colourful arrows will show direction and rich labels will explain the surroundings.

## 03 Monitor

Dorothy helps you check on your loved ones while you're away. It will show you the exact room where your loved ones are now.



## 04 Always On

Dorothy interface is always on – your loved ones don't need to press any button. A gentle notification in your voice will capture their attention – let Dorothy do the work afterwards.



Dorothy TPXimpact

[dorothy.app](https://dorothy.app)